

SINGLE OUTCOME AGREEMENT MEASURING SUCCESS 2013/14

Our assets have provided opportunities for sustainable economic growth.

Over the next three years Partners will work to achieve:






- Growth sectors supported to develop
- Job growth in the identified sectors
- Significant growth in the production of energy
- Support communities to become more economically sustainable
- Utilise the natural and cultural resources for sustainable economic benefit
- Preparing a skilled workforce for growth sectors in the islands
- Reduce carbon footprint


Long term outcomes:

1. The populations of the Outer Hebrides are stable, with a better balance of age, gender and socio-economic groups
2. The economy of the Outer Hebrides and the economies within the Outer Hebrides are thriving
3. The people of the Outer Hebrides are well educated, well trained and well skilled
5. The communities of the Outer Hebrides are stronger and more able to identify, articulate and take action and responsibility regarding their needs and aspirations
6. The people of the Outer Hebrides derive maximum benefit from the natural and cultural resources of the area, whilst at the same time safeguarding those resources to benefit future generations

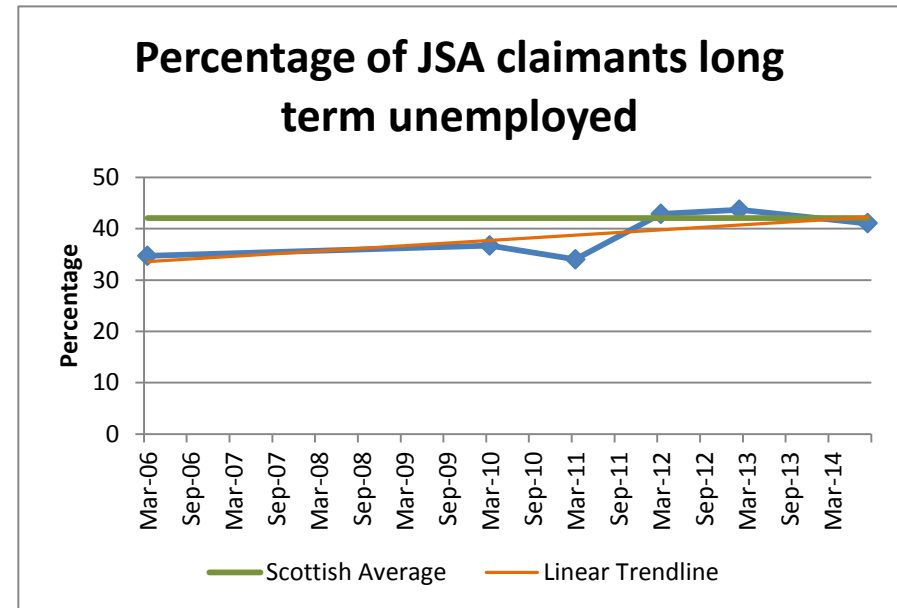
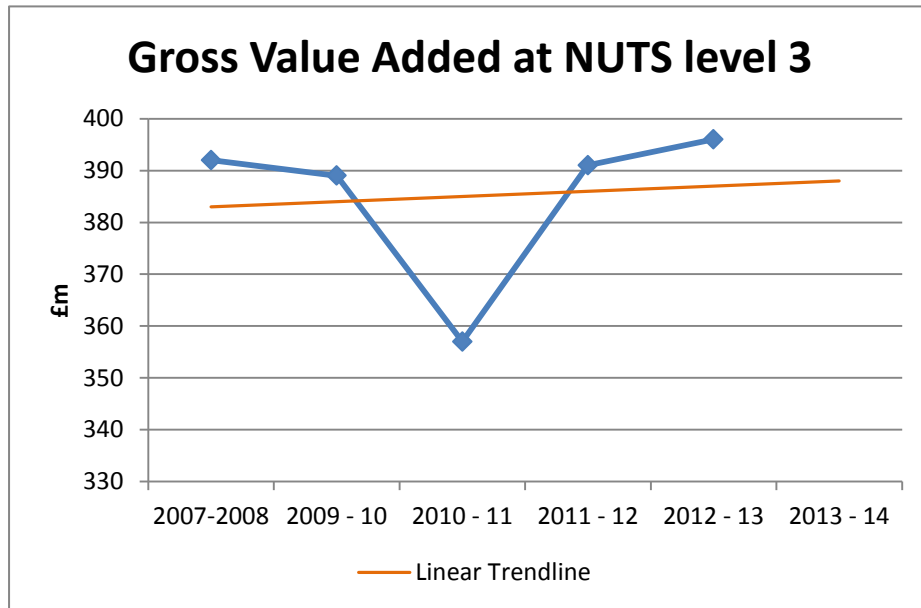
Highlights of some of the work delivered to achieve outcomes

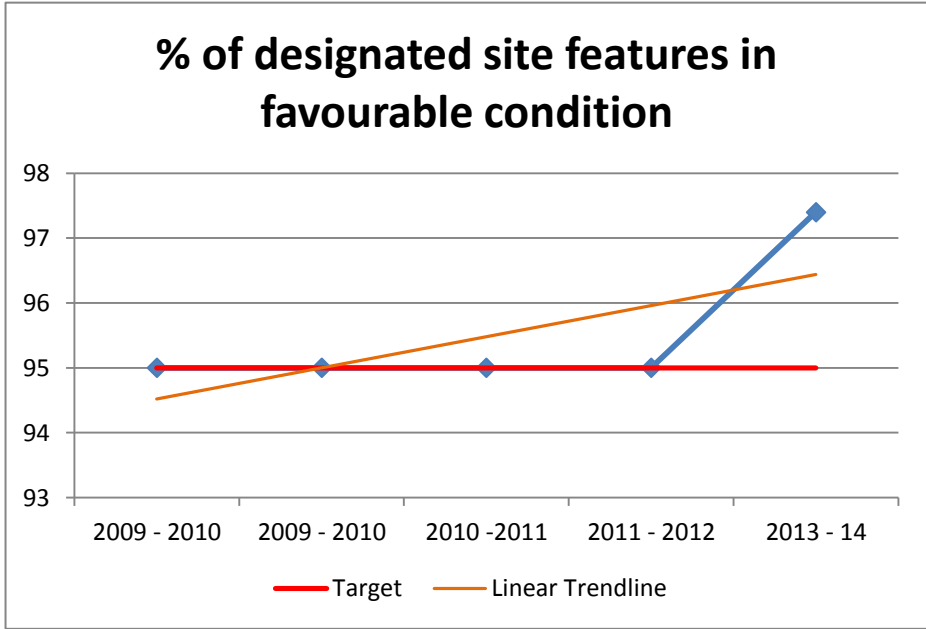
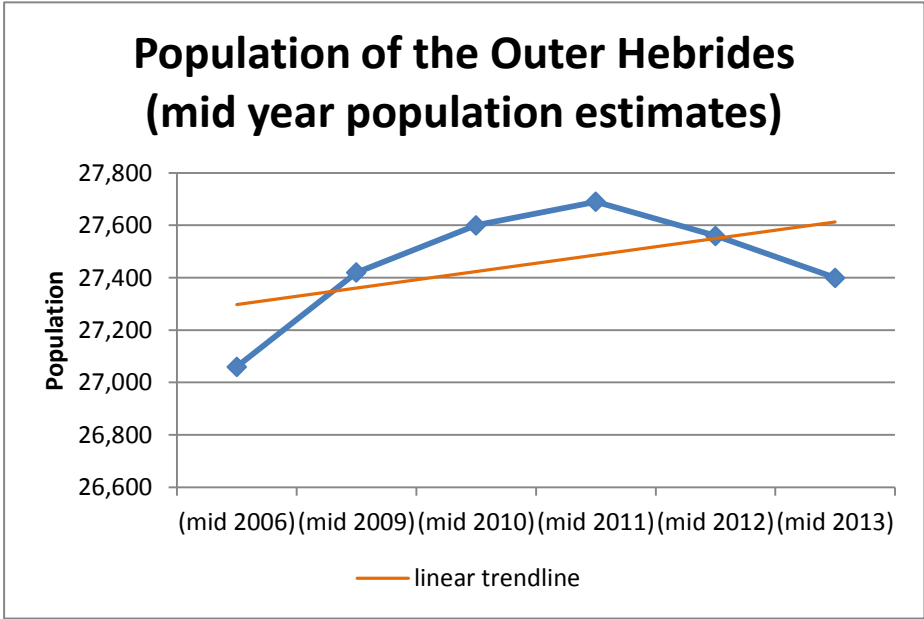
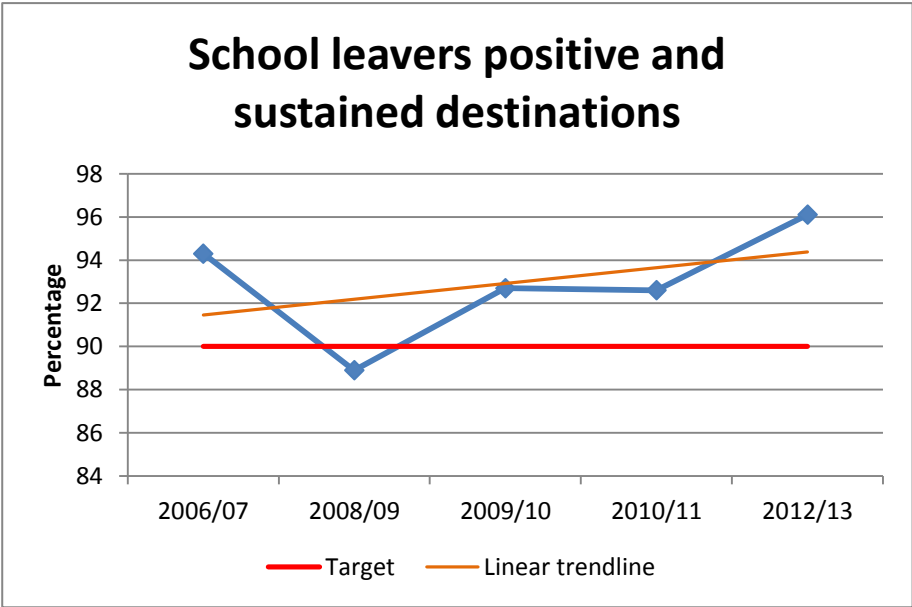
- Development of an Energy Strategy
- Ongoing participation in government-led initiatives to identify solutions for grid access issues facing renewable schemes in island communities.
- Substantial work done on the progression of an Outer Hebrides Energy Supply Company.
- Engagement with industry via Energy North and SDS has identified a number of areas to be progressed in respect of supply chain and skills issues.
- Delivery of the Outer Hebrides Creative & Cultural Industries Strategy with initiatives such as Katie Morag season 2 and support to weavers to implement loom modifications
- Bord na Gaidhlig report assisting organisations in the Outer Hebrides by Providing £1.05 million of funding to organisations supporting 35 jobs
- Completion of Phase 2, museum, archive and completed ground floor is on target for completion in January 2015.
- Deliver new infrastructure at Ardveenish to support the fisheries sector
- Facilitate a food and drink showcase at the Hebridean Celtic Festival in 2015.
- Outer Hebrides Tourism Strategy (Tourism Hebrides 2020) was launched in April
- Hebtember initiative has been delivered securing funding from the Comhairle and Creative Scotland.
- The Hebridean Way project is progressing well.

Indicators	Unit	Baseline	2009/10	2010/11	2011/12	2012/13	2013/14	Target	Direction of Travel	Comments
Gross Value Added (at NUTS Level 3) SNS http://www.ons.gov.uk/ons/taxonomy/index.html?nscl=Regional+Accounts	£	392m (2008)	389m (2009)	357m (2010)	391m (2011)	396m (2012)	N/A	Increase		
Percentage of JSA claimants long term unemployed (ONS) http://www.ons.gov.uk/ons/taxonomy/index.html?nscl=Claimant+Count	%	34.70 (March 2006)	36.70 (March 2010)	34.00 (March 2011)	42.85 (March 2012)	43.68 (February 2013)	41.01 (Aug 2014)	Decrease (Scottish Av March 2013 - 42.07%)		
School leavers positive and sustained destinations (SDS)	%	94.30 (2006/07)	88.90 (2008/09)	92.70 (2009/10)	92.60 (2010/11)	96.1% (2012/13)	N/A	Maintain above 90%		OH is highest in Scotland national average of 91.4%.
Population of the Outer Hebrides (NRS mid year population estimates) www.scotland.gov.uk/Topics/Statistics/SHCS	#	27,060 (mid 2006)	27,420 (mid 2009)	27,600 (mid 2010)	27,690 (mid 2011)	27,560 (mid 2012)	27,400 (mid 2013)	Increase to match and exceed Scottish growth rates		All year's population figures have been revised since Census.
% of designated site features in favourable condition (SNH)	%	95 (2010)	95 (2010)	95 (2011)	95 (2012)	N/A	97.4 (2014)	Maintain at 95%		Highest proportion in Scotland at present.

Indicators	Unit	Baseline	2009/10	2010/11	2011/12	2012/13	2013/14	Target	Direction of Travel	Comments
% of water bodies achieving good ecological status (SEPA)	%	92 (2008)	92	92	92	92	N/A	93% (2015), 94% (2021), 99% (2027)		2013 classification has not yet been published. SEPA will be publishing a full report next year regarding the targets set in the first River Basin Management Plan.

Overall direction of travel for the priority





Older people positively contribute to our economy and communities, and access appropriate and quality services to enable them to retain their independence

Over the next three years Partners will work to achieve:


- Building the capacity of communities to support older people
- Supporting older people into training, lifelong learning and employment
- Supporting older people into healthier lifestyles
- Support older people to remain independent for as long as possible
- Provided more integrated services for older people



Long term outcomes:

1. The populations of the Outer Hebrides are stable, with a better balance of age, gender and socio-economic groups
3. The people of the Outer Hebrides are well educated, well trained and well skilled
4. The physical and mental health and wellbeing of the people throughout the Outer Hebrides is improved
5. The communities of the Outer Hebrides are stronger and more able to identify, articulate and take action and responsibility regarding their needs and aspirations
7. The services of the Outer Hebrides are of high quality, continuously improving and reflective of local needs

Highlights of some of the work delivered to achieve outcomes

- Accredited Skills and Training are supporting all CNES Health and Social Care Staff to go through a rolling programme to undertake their SVQ.
- OHMEET offers training opportunities for persons over the age of 50 to be provided with work placements
- A wide range of CLD classes and activities target older people and their areas of specific interest
- A wide range of volunteering opportunities for older people and for those who want to work with older people
- Adaptations Budget protected with ongoing programmes of central heating, windows, kitchens, bathrooms and insulation installation across HHP housing stock with value of approximately £3m annually.
- £400k invested in Aids and Adaptations in 2013/14 in HHP stock.
- Data Sharing Project identified a business process and technical model required for consistent and secure data sharing across the partners
- Work progressing on community resilience, identifying vulnerable adults in communities and winter resilience

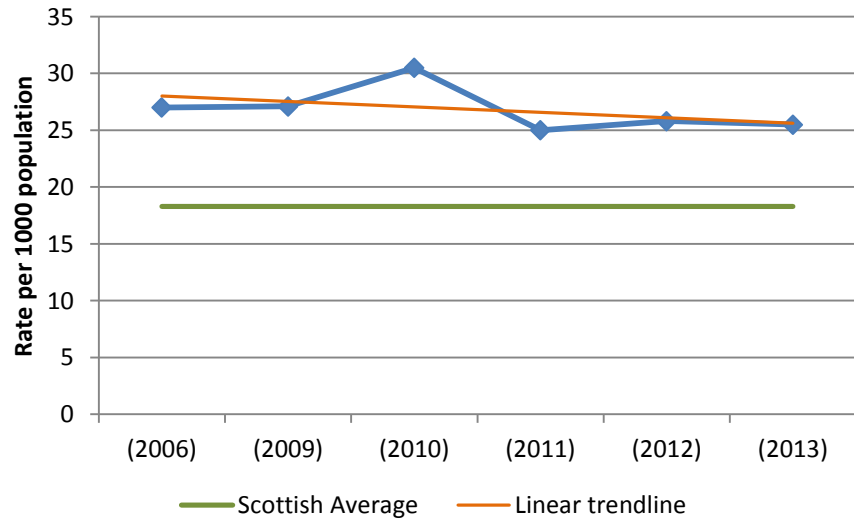
Indicators	Unit	Baseline	2009/10	2010/11	2011/12	2012/13	2013/14	Target	Direction of Travel	Comments
Number of older people aged 65+ with intensive care needs receiving personal care at home (Rate per 1000 population) www.scotland.gov.uk/Resource/0041/00411610.xls	#	27.00 (2006)	27.10 (2009)	30.50 (2010)	25.00 (2011)	25.8 (2012)	25.5 (2013)	Increase		Scottish Average 18.3

Indicators	Unit	Baseline	2009/10	2010/11	2011/12	2012/13	2013/14	Target	Direction of Travel	Comments
Percentage of pensioners in fuel poverty (Scottish Housing Condition Survey www.scotland.gov.uk/Topics/Statistics/SHCS)	%	83.00 (2003-2006)	86.00 (2007-09)	83.00 (2008-10)	80 (2009-11)	86 (2010-12)	N/A	Decrease		
Pensioner Households with Disrepair Scottish House Condition Survey www.scotland.gov.uk/Topics/Statistics/SHCS)	%	82 (2003-2006)	77 (2007-09)	73 (2008-10)	70 (2009-11)	79 (2010-12)	N/A	Decrease		

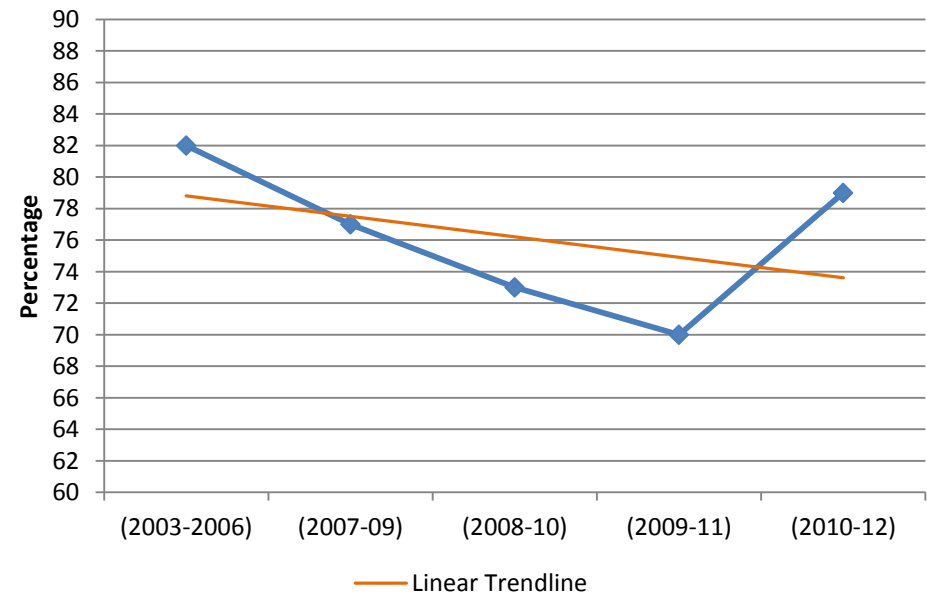
Overall direction of travel for the priority



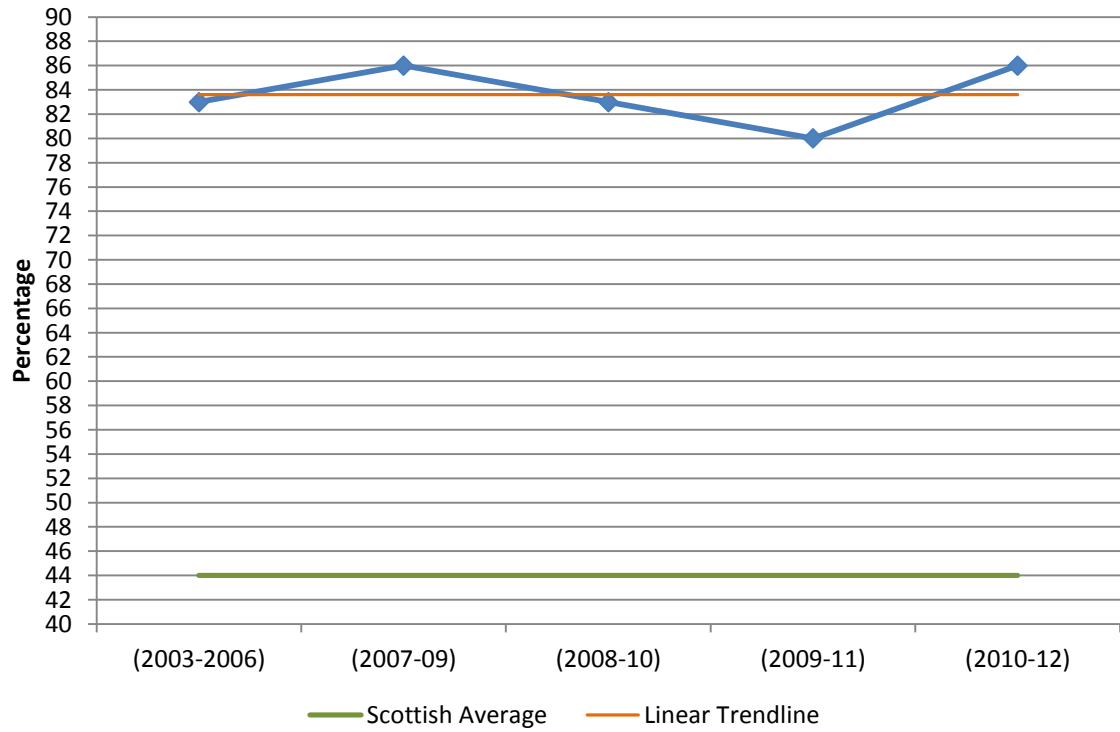
Number of older people aged 65+ with intensive care needs receiving personal care at home



Pensioner Households with Disrepair



Percentage of pensioners in fuel poverty



Our children and young people have the best start in life

Over the next three years Partners will work to achieve


- Early interventions to ensure that parents are supported
- Support for families in communities
- Support families and children to lead a healthier lifestyle
- Identify and support vulnerable families



Long term outcomes:

1. The populations of the Outer Hebrides are stable, with a better balance of age, gender and socio-economic groups
3. The people of the Outer Hebrides are well educated, well trained and well skilled
4. The physical and mental health and wellbeing of the people throughout the Outer Hebrides is improved
5. The communities of the Outer Hebrides are stronger and more able to identify, articulate and take action and responsibility regarding their needs and aspirations
7. The services of the Outer Hebrides are of high quality, continuously improving and reflective of local needs


Highlights of some of the work delivered to achieve outcomes

- The Early Years collaborative work has highlighted areas to test change this includes attachment, communication, improved referrals, increase in Gaelic communication, physical activity, fine motor skills, reading as a family, healthy start vouchers, nutritional advice and parenting.
- Provision of good quality training for those wishing to enter the childcare profession
- A range of activities and projects developed to encourage physical activity i.e., walking as a family and nursery schools providing consistent morning physical activity.
- Maternal Infant Nutrition Group interventions including breast feeding, healthy start vitamins and vouchers and parenting support.
- A range of support groups for parents and grandparents
- Insulation programmes to improve homes for families.

Indicators	Unit	Baseline	2009/10	2010/11	2011/12	2012/13	2013/14	Target	Direction of Travel	Comments
Life Expectancy at Birth										
Female (NRS Life Expectancy Scottish Areas)	#	79.90 (2004-06)	82.00 (2007-2009)	82.00 (2008-10)	N/A	N/A	80.2 (2010-12)	Meet or exceed Scottish Average 80.80		

Indicators	Unit	Baseline	2009/10	2010/11	2011/12	2012/13	2013/14	Target	Direction of Travel	Comments
Male (NRS Life Expectancy Scottish Areas)	#	73.00 (2004-06)	73.50 (2007-09)	74.00 (2008-10)	N/A	N/A	76.4 (2010-12)	Meet or Exceed Scottish Average 76.60		
Child Poverty data (SNS) http://www.sns.gov.uk/	%	10.2 (2011/12)			10.2	N/A	N/A	Decrease	N/A	Child poverty data has not been updated by 2010.
Rate of Stillbirth (Early Years Collaborative Measure) ISD	No./ Rate per 1000 total births	0 2008/09	0	0	0	0	N/A	Maintain (National Target 4.9 per 1,000 births in 2010 to 4.3 per 1,000 births in 2015)		
Rate of Infant Deaths (Early Years Collaborative Measure) ISD	No./ Rate per 1000 total births	0 2008/09	0	0	12.8 per 1,000 live births (actual number – 3)	12.7 per 1,000 live births (actual number – 3)	N/A	Decrease (National Target 3.7 per 1,000 live births in 2010 to 3.1 per 1,000 live births in 2015)	See foot note ¹	

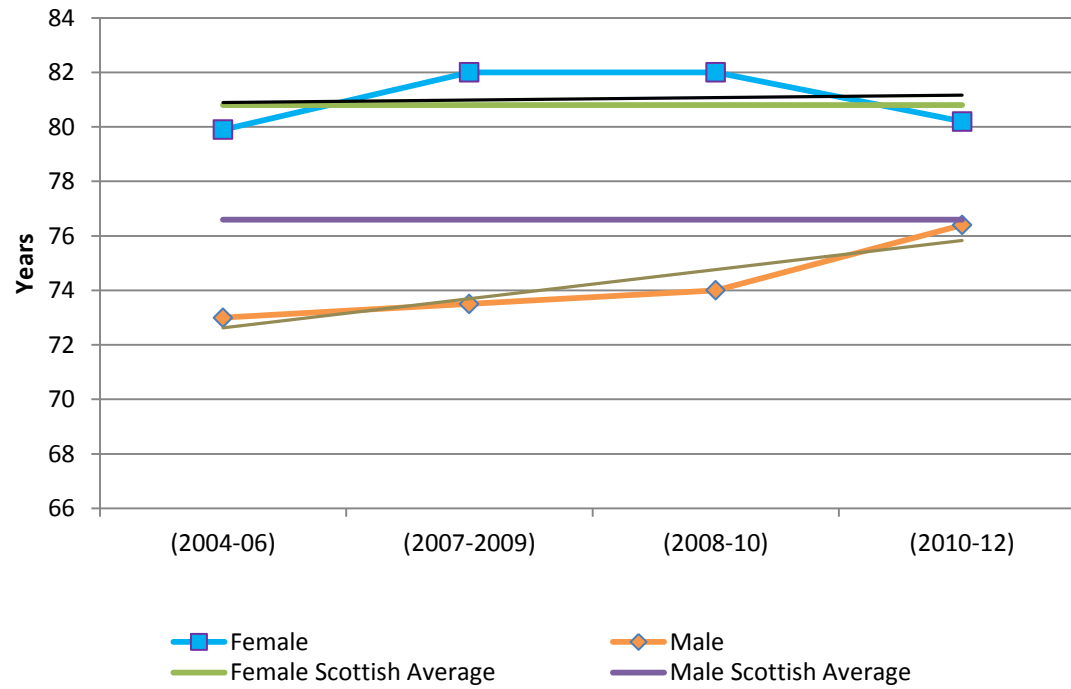
¹ : annual NND rates involve small numbers especially for small areas such as Western Isles and can produce wide fluctuations year on year as a result of chance. It is important then to assess whether this variation is statistically significant. There are a number of ways of doing this while aggregating data over a number of years can also mitigate the effects. Doing so for 2007-12 and assessing significance of variation shows WI within the range of expected normal variation to Scottish norm. Also, taking into account recommendations to measure NNDs for infants > 1000g and without major congenital anomalies or measuring for those over 24 weeks gestation for comparative purposes again places WI in range of expected variation. Although found not to be statistically significant, annual figures should still be investigated for evidence of potential outliers or sentinel events arising from altered processes or other factors and whether suggestive of a trend which may approximate towards statistical significance. All cases are accordingly reviewed on individual basis.

Indicators	Unit	Baseline	2009/10	2010/11	2011/12	2012/13	2013/14	Target	Direction of Travel	Comments
Percentage of children who have reached all of the expected developmental milestones at the time of their 27-30 month child health review. (Early Years Collaborative Measure)	%	TBC 2013	N/A	N/A	N/A	N/A	N/A	National Target 85%	N/A	27-30 mth assessment has not been rolled out yet
Percentage of children who have reached all of the expected developmental milestones at the time the child starts Primary School. (Early Years Collaborative Measure)	%	93.2 (2012/13)	N/A	N/A	N/A	93.2 (2012/13)	94.6 (2013/14)	National Target 90%		Tool has been tested over the last 2 academic years and issues still being dealt with

Overall direction of travel for the priority



Life Expectancy at Birth



Communities are safer and healthier by preventing, and reducing the harmful effects of alcohol

Over the next three years Partners will work to achieve



- Provision of divisionary activities
- Provide education and information for parents, children, young people and adults
- Support employers



Long term outcomes:

4. The physical and mental health and wellbeing of the people throughout the Outer Hebrides is improved
5. The communities of the Outer Hebrides are stronger and more able to identify, articulate and take action and responsibility regarding their needs and aspirations
6. The people of the Outer Hebrides derive maximum benefit from the natural and cultural resources of the area, whilst at the same time safeguarding those resources to benefit future generations
7. The services of the Outer Hebrides are of high quality, continuously improving and reflective of local needs

Highlights of some of the work delivered to achieve outcomes

- ADP strategy for prevention and early intervention work
- Alcohol Brief interventions for young people and for those presenting in health settings consuming over recommended amounts.
- Alcohol Brief Interventions for young people in contact with the police due to anti-social behaviour because of alcohol
- Substance misuse awareness sessions in schools and within community education settings
- Healthy life sessions incorporated into some work training sessions
- Volunteering opportunities that will support positive changes in their lifestyle, notably social engagement, positive activity and training opportunities.

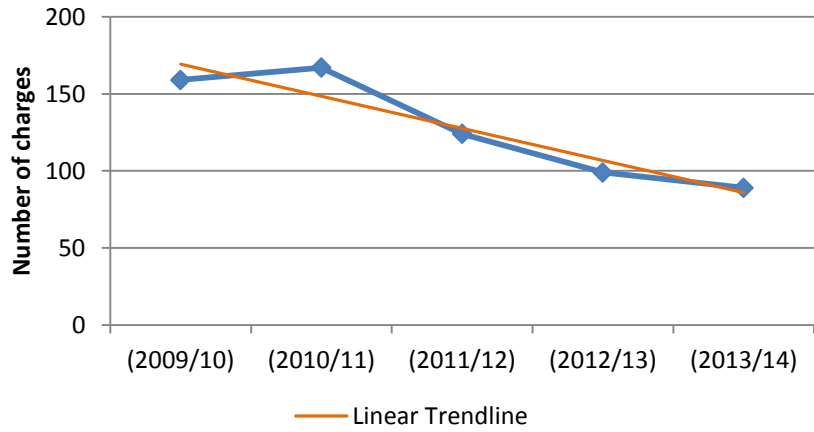
Indicators	Unit	Baseline	2009/10	2010/11	2011/12	2012/13	2013/14	Target	Direction of Travel	Comments
Charges brought for offences directly attributable to alcohol (Northern Constabulary)	#	159.00 (2009/10)	159.00 (2009/10)	167 (2010/11)	124 (2011/12)	99 (2012/13)	89 (2013/14)	Decrease		
Alcohol related general hospital discharge rate Data per 100000 population (WI NHS (SMR01) ISD ISD Alcohol related hospital discharges)	per 100,000 pop	1,736 (2006/07) Actual number - 469	1,006 (2009/10) Actual number - 285	1,047 (2010/11) Actual number - 293	930 (2011/12) Actual number - 268	805 (2012/13) Actual number -234	N/A	Decrease to meet Scottish Average (2012/13 Scottish average was 693 per 100,000 pop)		Due to changes in the way this indicator is reported, data for all years has been updated.

Indicators	Unit	Baseline	2009/10	2010/11	2011/12	2012/13	2013/14	Target	Direction of Travel	Comments
Percentage of people reporting 'alcohol misuse' as a concern (Northern Constabulary Community Consultation)	%	52.00 (Summer 2009)	52.00 (Summer 2009)	58.00 (Summer 2010)	58.00 (Summer 2011)	58.9 (Autumn 2012)	N/A	Decrease		
Reported alcohol related fires per 10000 population (Fire Service National Incident Recording System (for recording incident details) and Control Mobilising System for primary fire incidents with alcohol involvement)	#	0.4 (2006/07)	3.8	1.5	1.9	N/A	N/A	Decrease		

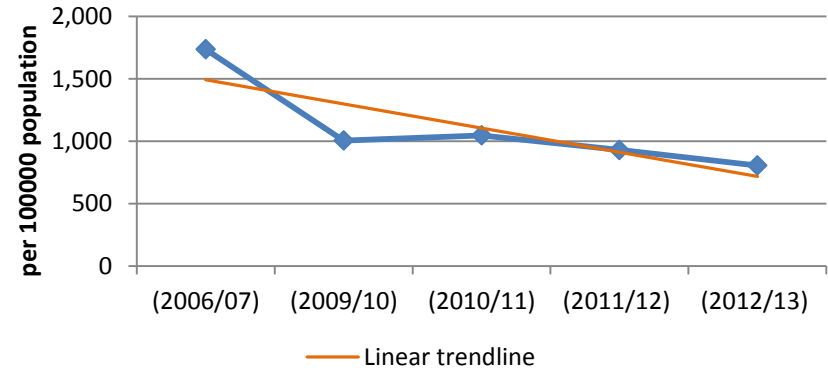
Overall direction of travel for the priority



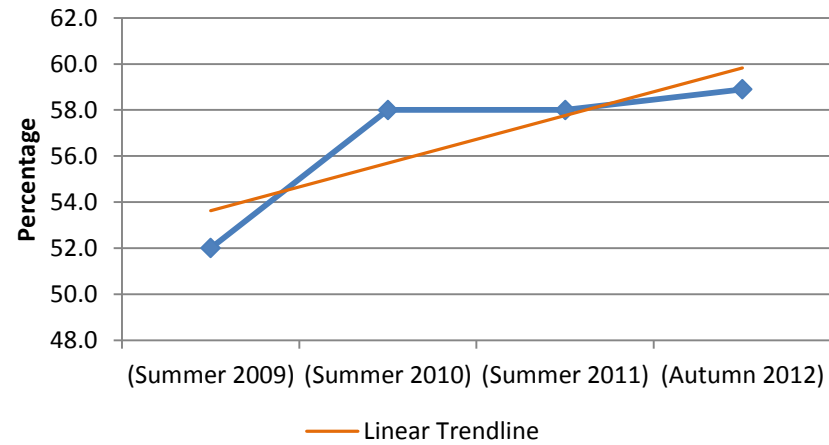
Charges brought for offences directly attributable to alcohol



Alcohol related general hospital discharge rate per 100000 population



Percentage of people reporting 'alcohol misuse' as a concern



Our communities are physically and mentally healthier through an increase in physical and social activity

Over the next three years Partners will work to achieve


- Increase access to opportunities for physical exercise.
- Increase access to social activities
- Support communities to provide social and physical activities locally
- Support people to access the natural environment safely




Long term outcomes:

4. The physical and mental health and wellbeing of the people throughout the Outer Hebrides is improved
6. The people of the Outer Hebrides derive maximum benefit from the natural and cultural resources of the area, whilst at the same time safeguarding those resources to benefit future generations
7. The services of the Outer Hebrides are of high quality, continuously improving and reflective of local needs

Highlights of some of the work delivered to achieve outcomes

- Outer Hebrides has the highest percentage of people volunteering in Scotland.
- 'Slàinte Mhath' continues to be a success with memberships increased by 7.1% in 2013 - 14.
- Community Education classes including access to Gaelic learning
- Wide range of fitness classes which are based in sports centres and in local community settings. Financial and development support of local sports clubs and activities are in place.
- Wide range of awards for young people including duke of Edinburgh and volunteering awards are undertaken by the young people of the islands
- WISE Project supported with a 3 year grant in place from SNH (50%) and match funding in place for 2 yrs.

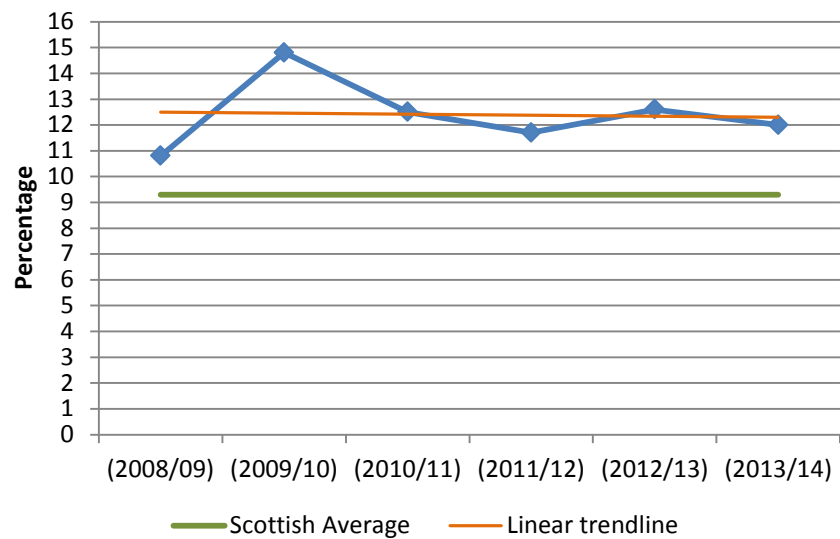
Indicators	Unit	Baseline	2009/10	2010/11	2011/12	2012/13	2013/14	Target	Direction of Travel	Comments
Childhood obesity in primary 1 (NHS WI/ScotPHO Child Health School System)	%	10.8 (2008/09)	14.8 (2009/10)	12.5 (2010/11)	11.7 (2011/12)	12.6 (2012/13)	12.0 (Provisional data)	Decrease		(2012/13 Scottish average was 9.3%) Due to changes in the way this indicator is reported, data for all years has been updated.

Indicators	Unit	Baseline	2009/10	2010/11	2011/12	2012/13	2013/14	Target	Direction of Travel	Comments
Percentage of people meeting recommended activity levels										
Men Scottish Health Survey http://www.scotland.gov.uk/Topics/Statistics/Browse/Health/scottish-health-survey/Publications/healthboard2011.xls	%	44.00 (2011/12)	N/A Previous data is for Shetland , Orkney and Western Isles	N/A Previous data is for Shetland , Orkney and Western Isles	44.00	N/A	N/A	Meet and exceed Scottish Average Scottish average in 2011 is 45%		
Women Scottish Health survey http://www.scotland.gov.uk/Topics/Statistics/Browse/Health/scottish-health-survey/Publications/healthboard2011.xls	%	29.00 (2011/12)	N/A Previous data is for Shetland , Orkney and Western Isles combined	N/A Previous data is for Shetland , Orkney and Western Isles combined	29.00	N/A	N/A	Meet and exceed Scottish Average Scottish average in 2011 is 33%		
Percentage of adults giving up time to volunteer in the last 12 months Scottish Household Survey http://www.scotland.gov.uk/Topics/Statistics/16002/LATables-2012/2012-exceldownload	%	29.00 (2005)	58.00 (2008)	56.00 (2010)	N/A	57 (2012)	N/A	Maintain / increase %		Scottish average in 2005 25% and 2012 27%

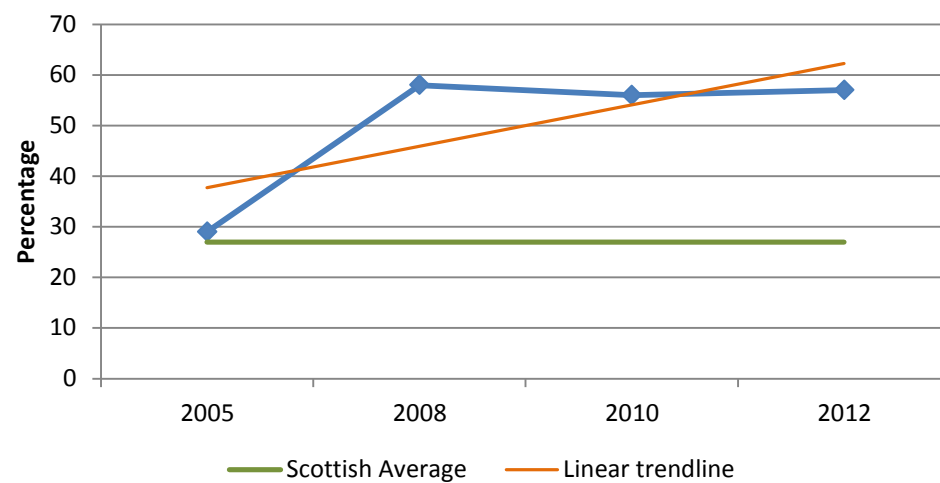
Overall direction of travel for the priority



Childhood obesity in primary 1



Percentage of adults giving up time to volunteer in the last 12 months



The people of the Outer Hebrides have an improved standard of living through addressing poverty and inequalities.

Over the next three years Partners will work to achieve






- Access to sustainable and appropriate employment
- Access to information about benefits and support
- Reduce fuel poverty






Long term outcomes:

1. The populations of the Outer Hebrides are stable, with a better balance of age, gender and socio-economic groups
2. The economy of the Outer Hebrides and the economies within the Outer Hebrides are thriving
4. The physical and mental health and wellbeing of the people throughout the Outer Hebrides is improved
5. The communities of the Outer Hebrides are stronger and more able to identify, articulate and take action and responsibility regarding their needs and aspirations
7. The services of the Outer Hebrides are of high quality, continuously improving and reflective of local needs

Highlights of some of the work delivered to achieve outcomes

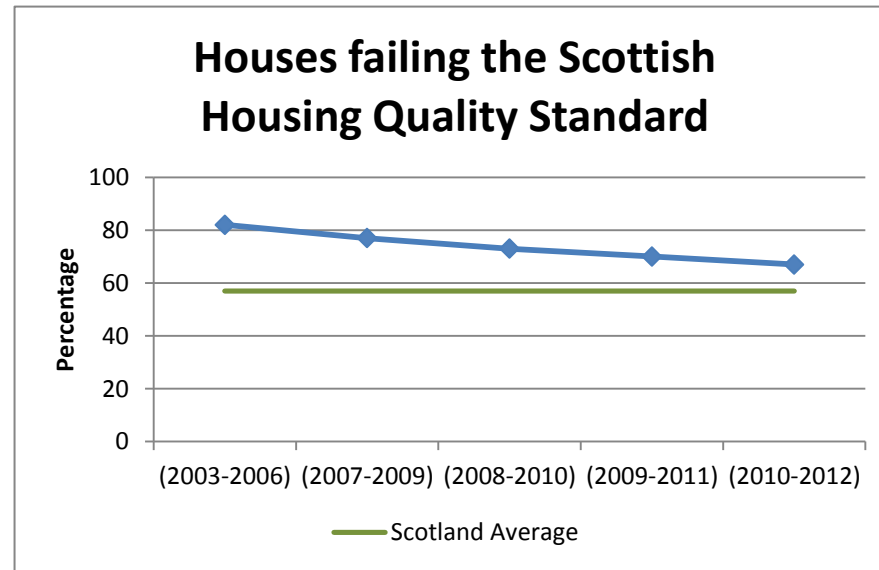
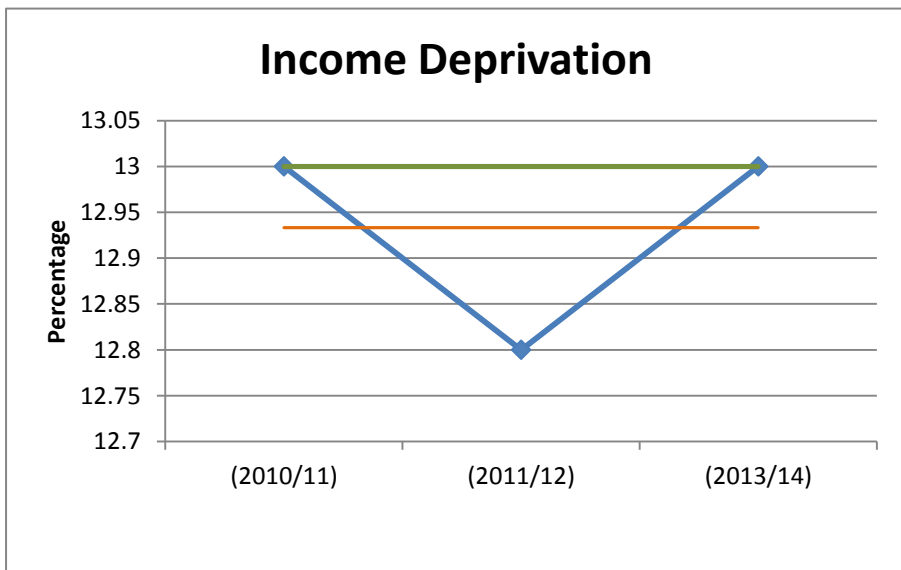
- Launch of Survival guide for those in crisis and practitioners working with clients
- Development of Local Services to ensure readiness for Welfare Reform implementation i.e. access to internet, awareness raising for clients and practitioners
- Poverty Awareness training sessions
- Provision of continued support with income maximisation through the Macmillan supported post for those with long term conditions.
- Support for housing tenants through Discretionary Housing Payments to offset the impact of the 'Bedroom Tax'
- Continued work on insulating hard to heat houses and cavity wall insulation
- Replacement of heating systems and windows/doors in HHP houses to reduce drafts and increase efficiencies.
- Continues benefits advice, debt advice and welfare rights through CAB in a variety of settings funded through a variety of partners and funding sources.
- Development of growth sectors which are paid at a higher level than some of the traditional sectors on the island

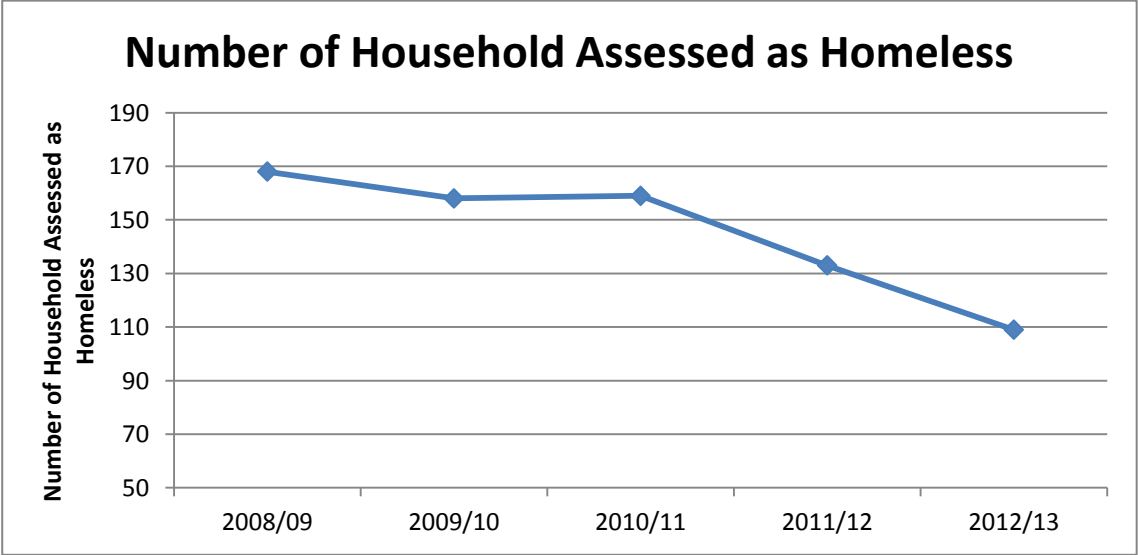
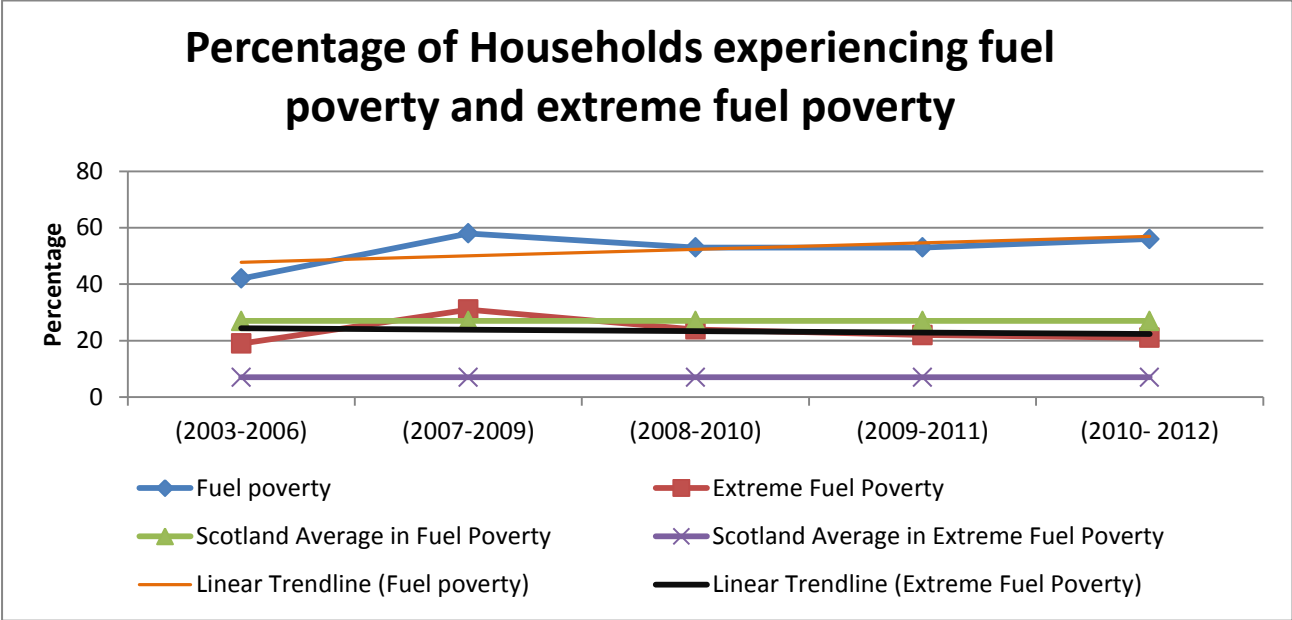
Indicators	Unit	Baseline	2009/10	2010/11	2011/12	2012/13	2013/14	Target	Direction of Travel	Comments
Income Deprivation SIMD	%	13 (2010/11)	N/A	13 (2010/11)	12.8 (2011/12)	N/A	13 (2013/14)	Decrease		Figure sourced from Scottish neighbourhood Statistics www.sns.gov.uk
Child Poverty data (SNS) http://www.sns.gov.uk/	%	10.2 (2011/12)	N/A	N/A	10.2 (2011/12)	N/A	N/A	Decrease	N/A	This child poverty data has not been updated since 2010
Percentage of Households experiencing:										
fuel poverty	%	42 (2003-2006)	58 (2007-2009)	53 (2008-2010)	53 (2009-2011)	56% (2010-2012)	N/A	Decrease		Note this does not reflect the information provided by TIG
extreme fuel poverty Scottish House Condition Survey www.scotland.gov.uk/Topics/Statistics/SHCS	%	19 (2003 - 2006)	31 (2007 - 2009)	24 (2008 - 2010)	22 (2009 - 2011)	21% (2010-2012)	N/A	Decrease		Note this does not reflect the information provided by TIG
Houses failing the Scottish Housing Quality Standard Scottish House Condition Survey www.scotland.gov.uk/Topics/Statistics/SHCS	%	82 (2003-2006)	77 (2007-2009)	73 (2008-2010)	70 (2009-2011)	67% (2010-2012)	N/A	Decrease		
Number of Household Assessed as Homeless CNES Statutory Performance Indicators	#	168 2008/09	158	159	133	109	N/A	Decrease		

Indicators	Unit	Baseline	2009/10	2010/11	2011/12	2012/13	2013/14	Target	Direction of Travel	Comments
Income Deprivation SIMD	%	13 (2010/11)	N/A	13 (2010/11)	12.8 (2011/12)	N/A	13 (2013/14)	Decrease		Figure sourced from Scottish neighbourhood Statistics www.sns.gov.uk
Child Poverty data (SNS) http://www.sns.gov.uk/	%	10.2 (2011/12)	N/A	N/A	10.2 (2011/12)	N/A	N/A	Decrease	N/A	This child poverty data has not been updated since 2010
Percentage of Households experiencing:										
fuel poverty	%	42 (2003-2006)	58 (2007-2009)	53 (2008-2010)	53 (2009-2011)	56% (2010-2012)	N/A	Decrease		Note this does not reflect the information provided by TIG
extreme fuel poverty Scottish House Condition Survey www.scotland.gov.uk/Topics/Statistics/SHCS	%	19 (2003 - 2006)	31 (2007 - 2009)	24 (2008 - 2010)	22 (2009 - 2011)	21% (2010-2012)	N/A	Decrease		Note this does not reflect the information provided by TIG
Houses failing the Scottish Housing Quality Standard Scottish House Condition Survey www.scotland.gov.uk/Topics/Statistics/SHCS	%	82 (2003-2006)	77 (2007-2009)	73 (2008-2010)	70 (2009-2011)	67% (2010-2012)	N/A	Decrease		
Number of Household Assessed as Homeless CNES Statutory Performance Indicators	#	168 2008/09	158	159	133	109	N/A	Decrease		

Overall direction of travel for the priority







The Outer Hebrides will be better connected with high quality infrastructure supporting renewables and broadband.

Over the next three years Partners will work to achieve



- Significant growth in the production of energy
- Access to next generation broadband

Long term outcomes:

1. The populations of the Outer Hebrides are stable, with a better balance of age, gender and socio-economic groups
2. The economy of the Outer Hebrides and the economies within the Outer Hebrides are thriving
6. The people of the Outer Hebrides derive maximum benefit from the natural and cultural resources of the area, whilst at the same time safeguarding those resources to benefit future generations
7. The services of the Outer Hebrides are of high quality, continuously improving and reflective of local needs

Highlights of some of the work delivered to achieve outcomes

- Ongoing participation in government-led initiatives to identify solutions for grid access issues facing renewable schemes in island communities
- Laying of Fibre Optic subsea cable has begun

Indicators	Unit	Baseline	2009/10	2010/11	2011/12	2012/13	2013/14	Target	Direction of Travel	Comments
Volume of electricity exported from the Outer Hebrides to the main UK electricity Grid	MW	3.9 (2011/12)	N/A	N/A	3.9	3.9	3.9	450MW (2017)		Baseline will not change until radial connector is activated. Currently anticipated 2019 at the earliest
Broadband: Average sync speed Ofcom Infrastructure Report http://maps.ofcom.org.uk/broadband	Mbit/s	4.8 (2012)	N/A	N/A	N/A	4.8 (2012)	5.1 (2013)	Scotland Average (10.8 Mbit/s)		Latest speeds from Ofcom still lag one year behind so just a small increase to 5.1%

Overall direction of travel for the priority



Notes




Graphic representation of data has been presented where there are sufficient data points to see variations and initial trends.

Trend lines are an easy visual indication of the direction of travel and do not take into account any mitigating factors in relation to the data

Data supplied is the most recent data available to the OHCPP. There is no consistency as to when data is produced by different sources. The CPU has collated the most up to date data supplied by the source.

Where possible direct hyperlinks are supplied for datasets, this is not always possible.

Key

	Meeting target and direction of travel is correct
	Not meeting target but direction of travel is correct
	Not meeting target consistently and direction of travel is incorrect
N/A	Information is not available at this time